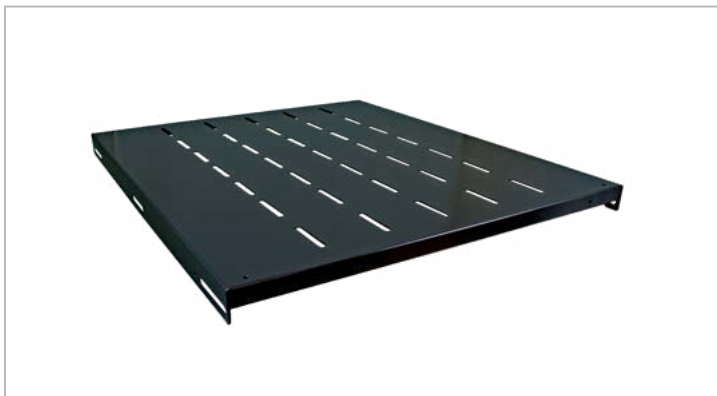




Fixed Shelf



Description

This 1U fixed shelf provides support for up to 200 lbs. of non-rackmountable equipment inside network and server cabinets.

Product Specifications

Product Type: Fixed Shelf

Material: 16 Gauge Cold Rolled Steel

Finish: Black Powder Coated

Loading Capacity: 200 lbs

Dimensions (HxWxD): Varies By Item #

Rack Unit Quantity: 1U

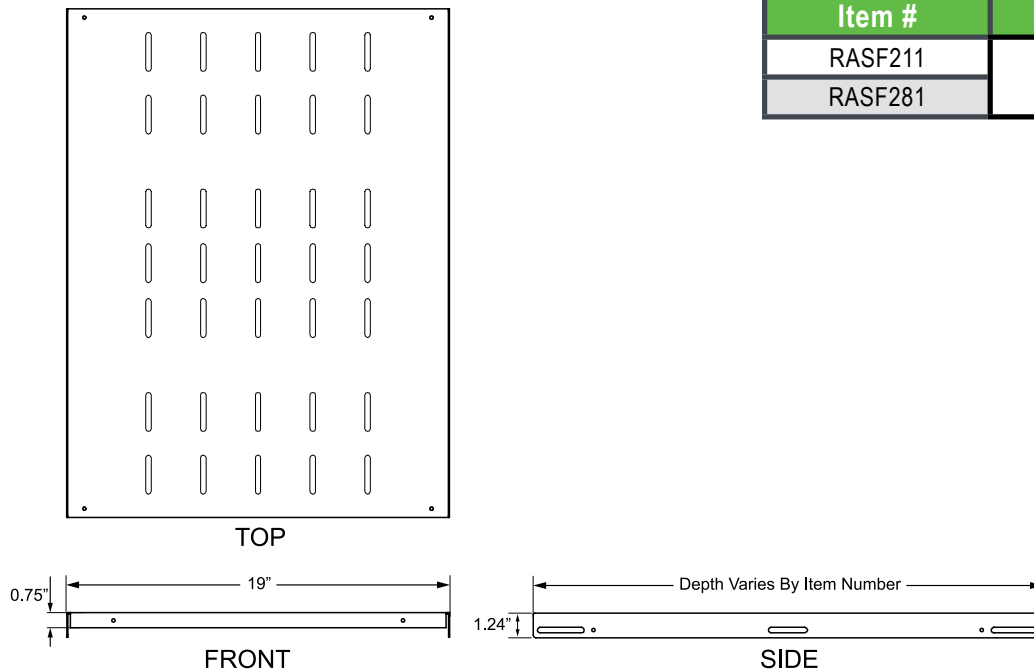
Mounting Hardware: Included

Compliance & Standards: RoHs

Quantity Per Package: Sold Individually

Ordering Information

Technical Drawing



Description		
1U Fixed Shelf		
Item #	Rack Units	Dims (H x W x D)
RASF211	1U	1.24" X 19" X 21.5"
RASF281		1.24" X 19" X 28.5"

TECHNICAL SHEETS ARE SUBJECT TO CHANGE WITHOUT NOTICE.

REV.20250110.5